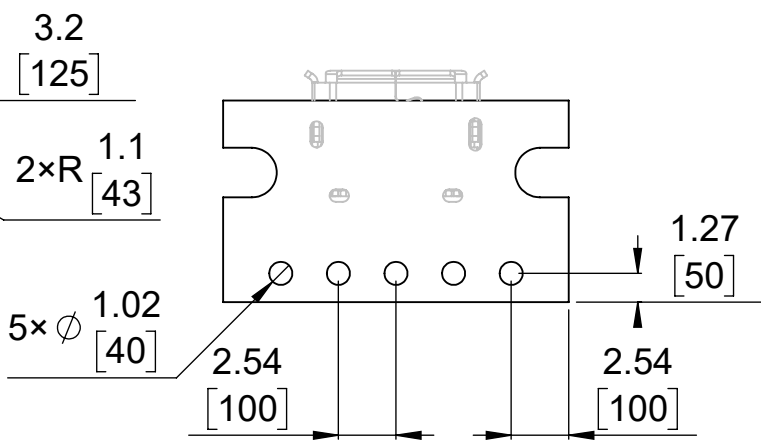
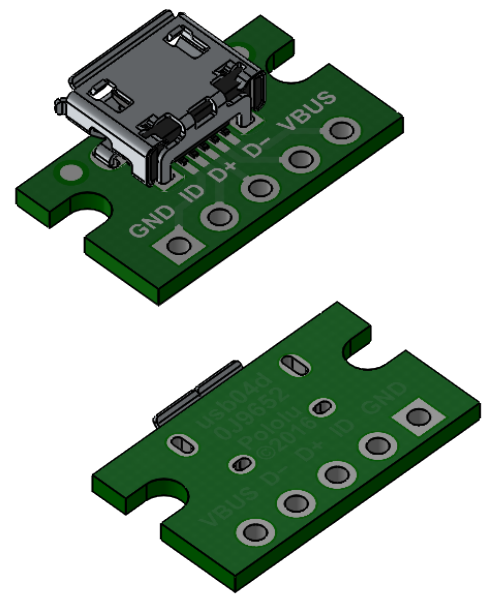


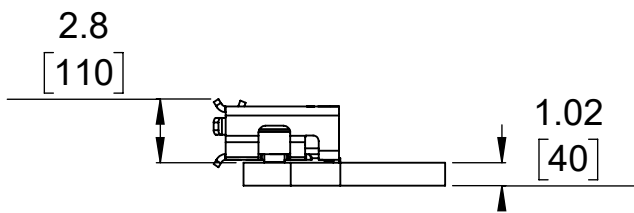
① Board dimensions (top view)
Scale 3:1



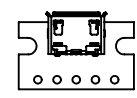
② Connector callouts (bottom view)
Scale 3:1



③ Isometric view
Scale 3:1




④ Profile
Scale 3:1



⑤ Actual size
Scale 1:1

1. To get the specified scale, select 100% in print settings.
2. Drill location tolerance: ± 0.1 [± 5].
3. Board edge tolerance: ± 0.3 [± 10].

https://www.pololu.com/product/2586	
Name: USB Micro-B Connector Breakout Board	Item number: 2586
Drawing date: 1 July 2016	
Units: mm [mil]	PCB dev code: usb04d
 © 2016 Pololu Corporation	